

# DDI78-EXF1

## ATEX Certified Outdoor Motion Sensors

The DDI78-EXF1 model of stereo Doppler was developed to protect Hazardous location due to the presence of flammable gasses or vapors, combustible dusts or easily ignitable fibers of flyings. The DDI78-EXF1 electronic assembly is configured to be easily inserted into special explosion-proof enclosure. The unit is suitable for application in hazardous locations under the following classifications. Zone: 1 & 1 and 21-22.

### Applications

This unit is suitable for installation at petroleum, chemical and petrochemical plants, storage areas and other processing facilities where hazardous substance are handled or stored.

### Classifications

- According to CENELEC
- Conforming to ATEX Directive 94/9 EC and standards EN50014-18
- EC0081 Ex II 2 G for gas EEx d IIC T6
- EC0081 Ex II 2 D-T = +85° for dust
- According to IEC: - DIPA 21 Ta = +85°C

### Features

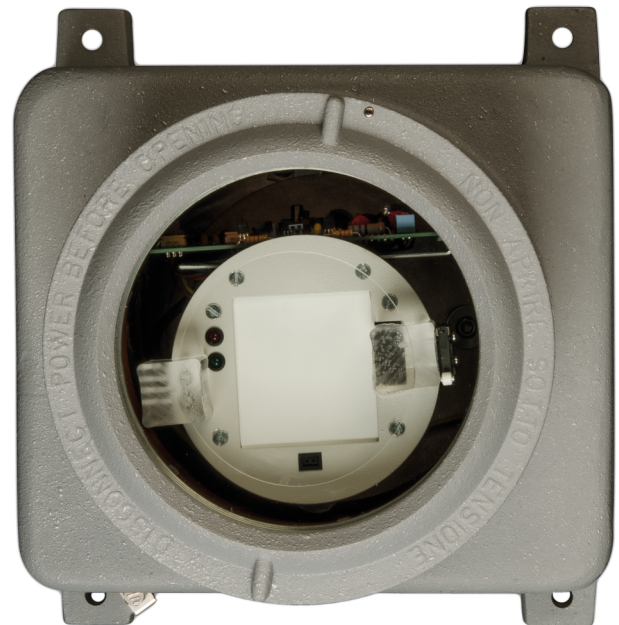
Stereo Doppler Microwave Detector: Two receiving channels with the ability to eliminate vibration and periodically moving objects as sources of the alarms.

Digital Range Control: Ten-position digital switch adjust the overall size of the sensor's detection area.

Digital Sensitivity Control: Ten-position digital switch adjust the amount of movement required to initiate an alarm condition.

Enhanced Bird Control: Two-position switch adjust the sensor's immunity to birds and small animals.

Walk test Sounder: Optional audible tester to assist in the walk-test and initial sensor set-up. The sounder greatly simplifies the installation as it enables walk testing and adjustment by a single installer.



### Details

- Stereo doppler microwave detector
- Stereo doppler supervision
- Digital range control
- Digital sensitivity control
- Enhanced Bird immunity control
- Walktest sounder
- Tamper proof
- Solid state relay
- ATEX certified metal housing
- Cable gland included

# DDI78-EXF1

## ATEX Certified Outdoor Motion Sensors

### Technical specifications

#### General

Technology	Microwave
Anti masking	No
Pet immune	No
Camera	No

#### Detection

Max. detection range	30 m
Detection range	30 m x 13 m
Undercrawl protection	No
Microwave frequency (nom.)	10.587 GHz
Max. microwave output (at 1m)	120 µW/cm <sup>2</sup> at the face of the unit
Microwave frequency	Belgium, Denmark, France, Italy, Greece, Ireland, Luxembourg, Netherlands, Sweden, UK

#### Wired/wireless

Wired-wireless	Wired
----------------	-------

#### Inputs/outputs

Relay contact rating	0.1 A, 50 V
----------------------	-------------

#### Electrical

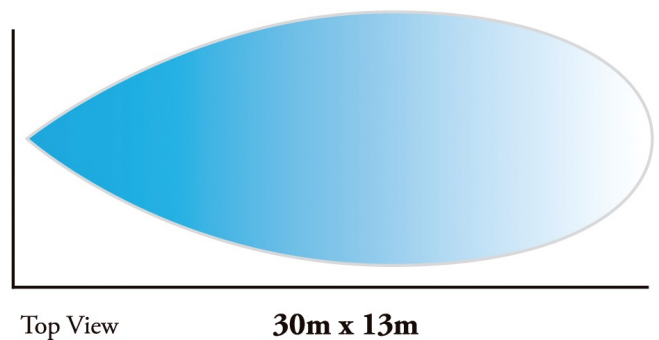
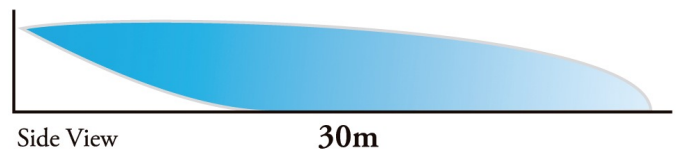
Power supply value	8.5 to 20 VDC
Current consumption	150 mA @ 12 VDC (LEDs off )

#### Physical

Physical dimensions	255 x 334 x 290 mm (W x H x D)
Net weight	12 kg
Colour	Grey
Access holes	1/2" cable gland suitable for non-armored cable from 2mm to 9mm diameter

#### Environmental

Operating temperature	-34 to +70°C
Relative humidity	0 to 100% noncondensing
Environment	Outdoor
IP rating	IP66 / IK10



As a company of innovation, Carrier Fire & Security reserves the right to change product specifications without notice. For the latest product specifications, visit [firesecurityproducts.com](http://firesecurityproducts.com) online or contact your sales representative.

Last updated on 27 October 2020 - 11:14

