

DC127

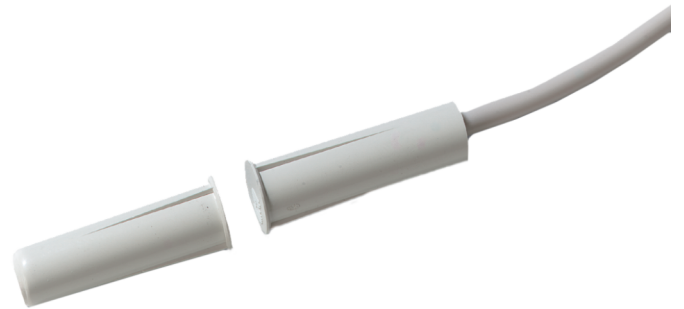
Contact

Press-Fit Contact

The DC121 press fit switch is an 11 mm diameter magnetic contact with wire leads. Use no glue or screws to mount; small ribs on the housing hold the contact in place. Heavy-duty housing resist crushing from swelling wood. An extra wide gap version, DC127, is available for applications that may be prone to false alarms caused by loose fitting doors. The DC222 is a variant with a change-over contact type.

Applications

For recessed applications, either indoor or outdoor. Also useful in protecting china cabinets or closets, double-hung windows and aluminium windows.



Details

- 11 mm press-fit mounting; no screws or glue needed
- Attractive, added security of recessed installation
- Heavy-duty housing resists crushing
- Available in different cable lengths
- Tamper loop provided

DC127

Contact

Technical specifications

General

Application type	Recessed Mount
Contact type	NC
Connectivity	4 wires, 2 m

Wired/wireless

Wired-wireless	Wired
----------------	-------

Physical

Physical dimensions	11 x 33 mm (Ø x L)
Colour	White
Operating gap	31 mm (max.)

