

ATS1742

RS485 databus closed loop interface

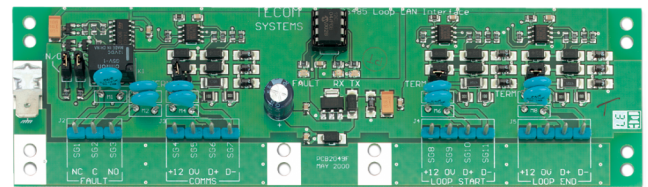
Product Overview

The ATS RS485 closed loop module allows the RS485 data bus to start from one point and end at the same point.

If a breakage occurs in the loop at any point, communication continues in the opposite direction, therefore ensuring a continuous operation. Breakages in the loop also trigger a fault relay, and the Advisor MASTER is able to determine the location of the breakage and generate an alarm.

Mounting

The board has a standard Aritech 'B' size footprint, mountable in existing Interlogix housings. Recommended cable is WCAT 52/54; 2-pair twisted, shielded, data cable.



ATS1742

RS485 databus closed loop interface

Technical specifications

General

Accessory group	ATS Master
Type	Module

Electrical

Operating voltage	10.5 - 13.8 V
Power supply type	VDC
Current consumption	80 mA max
Specified cable	Aritech WCAT 52/54 or equivalent
Max. distance from panel	1.5 km

Physical

Physical dimensions	175 x 50 mm (W x H)
---------------------	---------------------

Environmental

Operating temperature	0 to 50°C
Relative humidity	95 % noncondensing



As a company of innovation, Carrier Fire & Security reserves the right to change product specifications without notice. For the latest product specifications, visit firesecurityproducts.com online or contact your sales representative.

Last updated on 22 April 2021 - 17:33