

# ATS1741

## RS485 to RS232 interface

### Product Overview

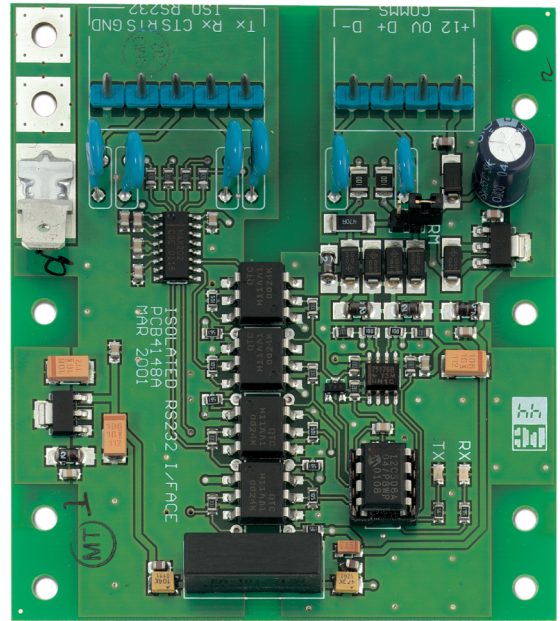
The ATS1741 converts the RS232 into RS485 and enables to extend the Advisor MASTER data bus. An RS232 PC connection can only be made up to distances of 12 m with the standard RS232 cable. When the distance is over 12 m, two ATS1741's can be used to extend this distance. The ATS1741 converts RS232 to RS485. Now a distance of up to 1,5 km is available.

### Functionality

When networking several control panels together on an RS485 LAN, an ATS1741 is used with each computer interface (ATS1801) to convert RS232 to RS485. On the RS485 the units are daisy-chained. The ATS1741 connected to the PC which transforms the RS485 into RS232 should have its own 12 V power supply. Units can be up to 1.5 km from the 4-door DGP or control panel, depending on the type of cable used. Up to 16 ATS control panels can be connected to one RS232 COM port on the PC.

### Mounting

The board has a standard Aritech 'B' size footprint, mountable in existing Interlogix housings. Recommended cable is WCAT 52/54; 2-pair twisted, shielded, data cable.



# ATS1741

## RS485 to RS232 interface

### Technical specifications

---

#### General

Accessory group	ATS Master
Type	Module

#### Electrical

Operating voltage	10.5 - 13.8 V
Current consumption	100 mA max
Isolation voltage	not applicable
Specified cable	Aritech WCAT 52/54 or equivalent
Max. distance from panel	1.5 km

#### Physical

Physical dimensions	90 x 80 mm (W x H)
---------------------	--------------------

#### Environmental

Operating temperature	-10 to 50°C
-----------------------	-------------



As a company of innovation, Carrier Fire & Security reserves the right to change product specifications without notice. For the latest product specifications, visit [firesecurityproducts.com](http://firesecurityproducts.com) online or contact your sales representative.

Last updated on 22 April 2021 - 17:33