

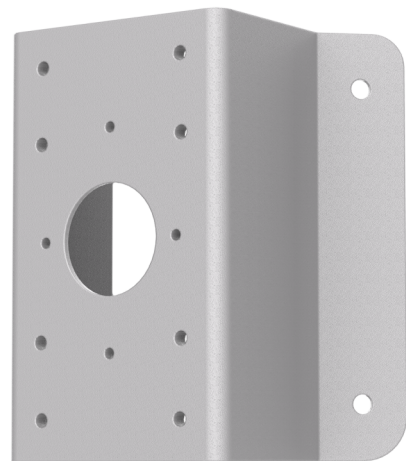
TVP-WM-CM

TruVision PTZ dome corner mount adapter

Overview

The TVP-WM-CM allows for a more efficient installation for corner mount PTZ installations. Such a corner mount installation allows a single PTZ camera to cover a wider field of view compared to a standard wall mount bracket.

The TVP-WM-CM can be combined with the TVP-WMB or GEA-102 TruVision PTZ brackets.



Details

- TruVision PTZ corner mount adapter
- Compatible with TVP-WMB and GEA-102
- Fits 90° corners

TVP-WM-CM

TruVision PTZ dome corner mount adapter

Technical specifications

General

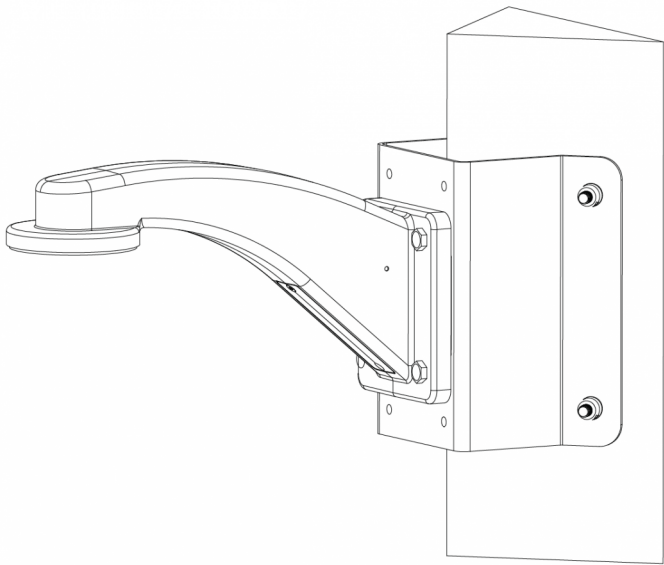
Bracket type	Camera
Camera support type	PTZ camera, TruVision bracket
Bracket mounting part	Mounting adapter
Mount type	Corner mount
Cable management	No

Physical

Physical dimensions	194 × 176 × 109 mm
	7.63 × 6.93 × 4.29 in.
Net weight	1548 g
	3.41 lbs.

Supported brackets

Wall mount brackets	TVP-WMB, GEA-102
---------------------	------------------



As a company of innovation, Carrier Fire & Security reserves the right to change product specifications without notice. For the latest product specifications, visit firesecurityproducts.com online or contact your sales representative.

