

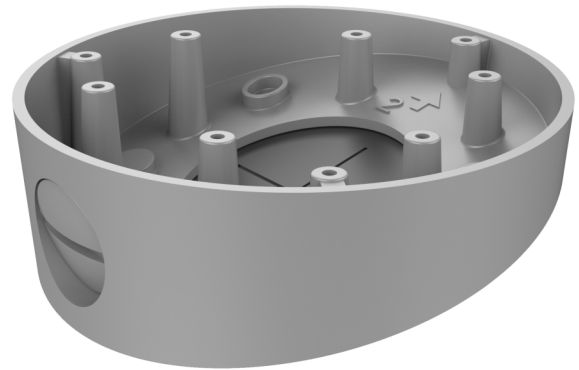
# TVD-BB3A

## TruVision dome angled back box TVW-56xx Wedge, TVD-6/7 Series Domes

### Overview

---

TVD-BB3A back box for indoor and outdoor use. The bracket can be used with the TruVision dome and wedge cameras.



### Details

---

- Suitable for the TruVision Dome
- Angled Back box
- Aluminum alloy
- Compatible with TVW-56xx Series 6 IP Wedge Cameras, TVD-6/7 Series Analog Domes, IP Indoor VF domes and TVD-11/31 and TVD-12/32 Series IP VF domes)

# TVD-BB3A

## TruVision dome angled back box TVW-56xx Wedge, TVD-6/7 Series Domes

### Technical specifications

---

#### General

Bracket type	Camera
Camera support type	TruVision mini domes (indoor)
Bracket mounting part	Mount connection box
Mount type	Back box

#### Physical

Physical dimensions	136 × 42 mm
Net weight	237 g
Colour	Grey (Pantone 428c)
Material	Aluminium

