

TVB-WBS

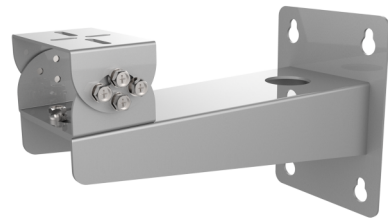
TruVision Stainless Steel Wall Mount Bracket for use with TVB-5801, TVB-5802

Overview

This Stainless Steel Wall Mount Bracket allows for wall mounting of the TruVision Stainless Steel Bullet Cameras. It is suitable for both indoor and outdoor use.

Used for the following cameras:

TVB-5801
TVB-5802



Details

- For use with TVB-5801, TVB-5802
- For wall mount installations
- Allows for cable management
- Stainless Steel

TVB-WBS

TruVision Stainless Steel Wall Mount Bracket for use with TVB-5801, TVB-5802

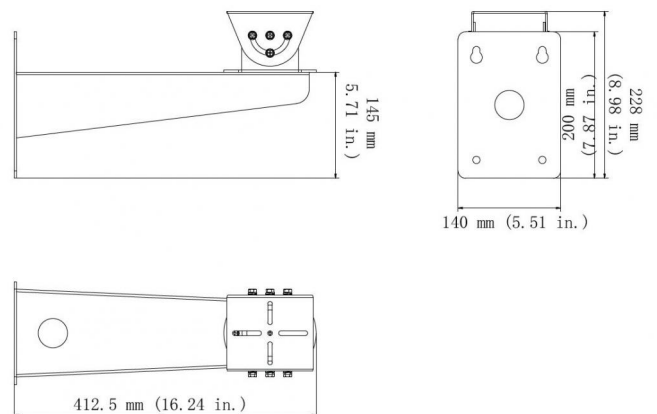
Technical specifications

General

Bracket type	Camera
Camera support type	PTZ camera
Bracket mounting part	Mounting bracket
Mount type	Wall mount

TVB-WBS

Dimensions:	412.5 x 140 x 228 mm
Weight:	3.80 kg
Color:	Grey color (Pantone 428c)



As a company of innovation, Carrier Fire & Security reserves the right to change product specifications without notice. For the latest product specifications, visit firesecurityproducts.com online or contact your sales representative.

