

DC106R4.7

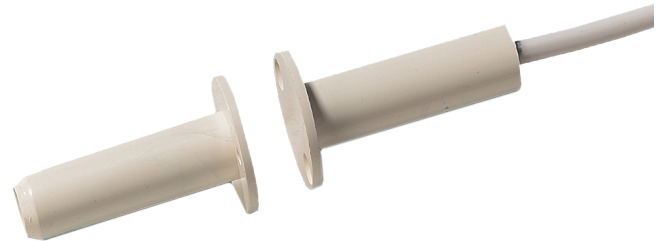
Recessed mount contact, flanged

Recessed contacts

The DC106 recessed contacts are designed for applications where the added integrity of mounting screws is needed. The units can be used in wooden and metal frame doors and windows.

Easy installation

The two mounting holes provide additional strength to prevent the contact and magnet from becoming dislodged due to environmental changes. This can occur when the door or window frames become warped and misaligned from moisture or the settling of a building.



Details

- Flange mounting for positive mounting
- Attractive, added security of recessed installation
- Easy installation
- Standard 2.5 m wire length
- Tamper loop provided
- Built-in resistors available to special order
- Mounting screws supplied

DC106R4.7

Recessed mount contact, flanged

Technical specifications

General

| | |
|------------------|--------------------------|
| Application type | Recessed Mount |
| Contact type | 4K7 end-of-line resistor |
| Connectivity | 4 wires, 2.5 m |

Wired/wireless

| | |
|----------------|-------|
| Wired-wireless | Wired |
|----------------|-------|

Physical

| | |
|---------------------|------------|
| Physical dimensions | 19 x 33 mm |
| Colour | White |
| Diameter | 9.5 mm |
| Borehole diameter | 9.5 mm |
| Dimensions magnet | 19 x 33 mm |
| Operating gap | 23 mm |

Environmental

| | |
|-----------------------|--------------|
| Operating temperature | -40 to +65°C |
|-----------------------|--------------|

Standards & regulation

| | |
|---------------|---------|
| EN50131 grade | Grade 2 |
|---------------|---------|

