

# PRIME

ANTI-INTRUSION CONTROL PANELS

CE EN 50131-1  
EN 50131-3  
EN 50131-6  
EN 50131-10  
EN 50136-1  
EN 50136-2  
EN 50130-4  
EN 50130-5  
CEB T031



## Control panel models

The Prime is available in 4 models (060S, 060L, 120L, 240L and 500L) capable of managing from 10 to 500 terminals, from 10 to 30 partitions and up to 4000 events in the memory. All control panel models are compatible with all existing Inim I-BUS peripheral devices.

The Prime guarantees certified safety at maximum level. The system complies with EN50131 Grade 3 and with EN50136 ATS-6.

- 5 models: 60S - 60L - 120L - 240L - 500L.
- From 10 to 500 terminals.
- Up to 30 partitions.
- Simultaneous management of wired and wireless devices.
- Up to 4,000 event memory capacity.
- EN50131 Grade 3 compliance for each model.
- Integrated LAN and USB interface.
- Compatibility with I-BUS devices.
- Metal enclosures for power supplies up to 6A.

## Control

- Firmware upgradeable in safety mode.
- Prime/STUDIO dedicated programming software.
- Guided user menu in the event of an alarm.
- Text driven programming menu.
- Installer App: push notifications, geolocation of control panels and faults, multicontrol-panel and multiplatform.
- User App: push notifications for security management and home automation.
- Peer-to-peer or multicontrol-panel and multi-platform Cloud management.

## Functions

- Voice functions: intercom, voice mailbox, guided menu, local dialler, environment listen-in.
- Home automation functions: lighting control with dimmer, chronothermostat, management of rollerblinds and motorizations, analogue outputs, timed activations.
- Management of intrusion-control and home-automation scenarios.
- Management of outputs for dimmer 230Vac loads.
- Video verification with Onvif cameras.

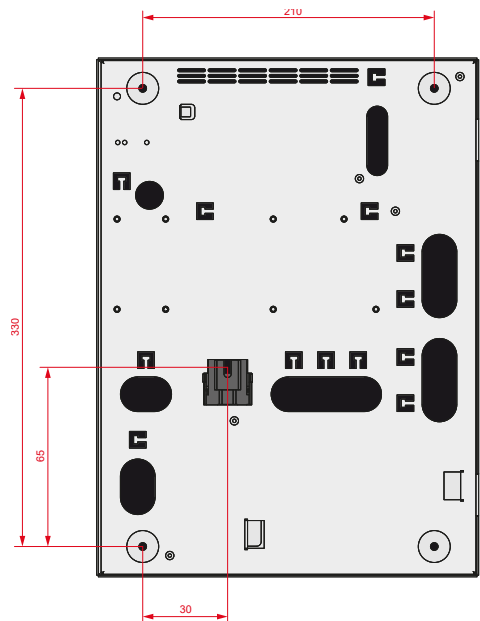
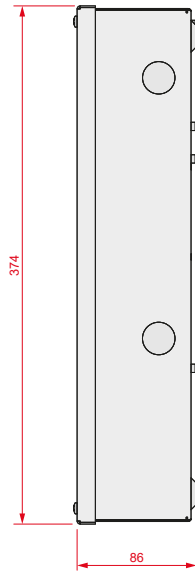
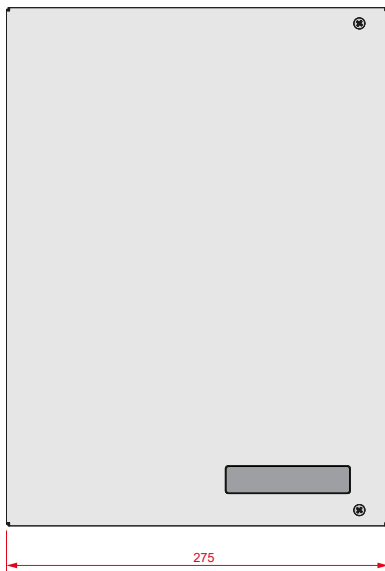
# PRIME

## Connectivity

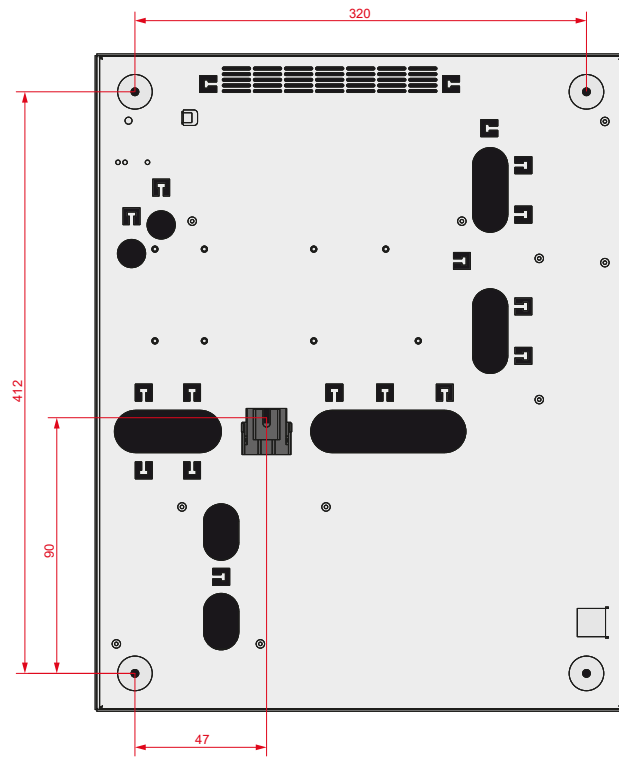
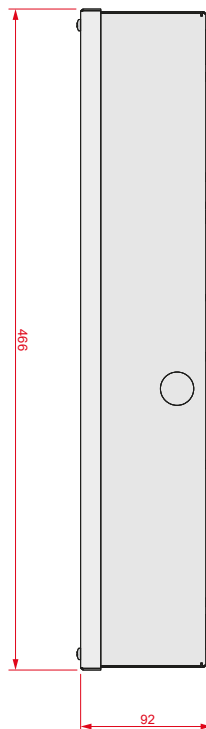
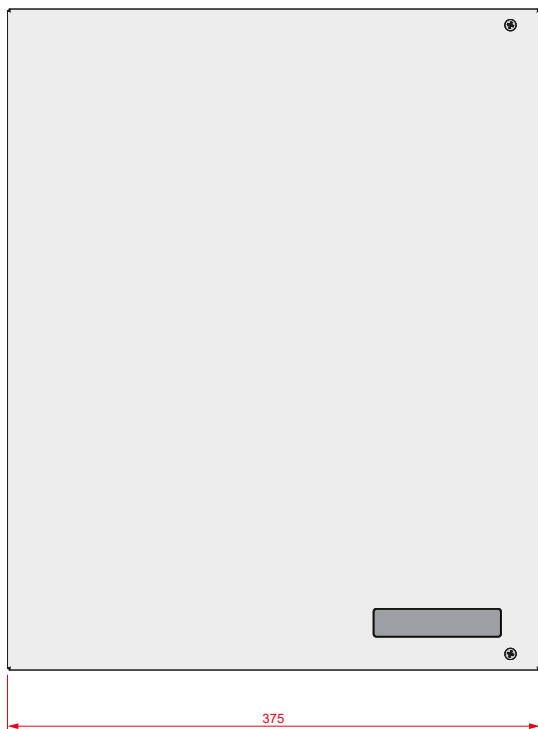
The Prime is natively managed by Inim Cloud thanks to the network card on board the control panel. So you can just connect the control panel to the installation router and it will automatically reach INIM Cloud, cancelling the procedures for connecting the control panel to the external world. Connection to INIM Cloud is not mandatory but guarantees a series of additional services for both the installer and the end user. Both will have Web access and will be able to manage their systems from any browser.

- Integrated on-board LAN connectivity with Inim Cloud services, DHCP, NTP and AES encryption.
- IP connectivity over WiFi networks, IEEE 802.11b/g/n standard (2.4GHz networks) by means of PrimeWiFi board
- PSTN, GSM, GPRS, 3G, 4G connectivity with voice, digital, SMS dialler.
- Cloud connection via GPRS/3G/4G and LAN with backup channel management.
- PrimeLAN board with webserver functions, graphic maps, e-mails, ONVIF video monitoring and KNX management over IP.
- Simultaneous transmission of events on Inim Cloud and other available PSTN, GSM channels.

### Control panels Prime060S



### Control panels Prime060L, Prime120L Prime240L, Prime500L



## Main features of Prime systems

	PRIME				
	60S	60L	120L	240L	500L
<b>Hardware characteristics</b>					
Maximum number of terminals in the system and number of mappable or relocatable terminals in the system <sup>3</sup>	60**		120**	240**	500**
On-board terminals (which can be configured as input/output)	10 (10)				
Programmable relays on the main board	Yes				
Programmable open-collector outputs on the main board	2				
Programmable 12V outputs	2 (AUX 1, AUX 2)				
Manageable partitions	10		20	30	
Integrated IP connectivity	Yes				
Integrated SIA-IP digital communication standard	Yes				
Housing for Flex5 expansion board in the enclosure	Yes				
Housing for NEXUS device in the enclosure	Yes				
Power supply: maximum current for the system (battery not included)	2.5 A		5 A		
Power supply: maximum current for battery recharge	1.2 A				
USB port	Yes				
Battery-charge monitored by battery temperature sensor	Yes				
Battery efficiency test	Yes				
AlienMobile and AlienMobile+ User Apps for smartphones or tablets (Android/iOS)	Yes				
InimTech Security Installer App for smartphones or tablets (Android/iOS)	Yes				
Cloud functions with Inim Cloud services	Yes				
Reprogrammability of control panel firmware	Yes				
Battery housing	Yes				
Dimensions (HxWxD)	27.5x37.4x8.6 cm		37.5x46.6x9.2 cm		
Weight (without battery)	3.2 Kg		5 Kg		
<b>Devices on I-Bus</b>					
Peripheral self-learning on the I-Bus	Yes				
Keypads <sup>1</sup>	10		15	30	
nBy proximity readers	20		30	60	
Flex5 5-terminal expansion boards	100				
Ivy sounder/flashers	10				
Air2 - BS200 transceivers (with automatic channel search)	20		30		
Nexus dialer	1				
Isolators	16				
Temperature probes	15				
Rolling shutter boards	30				
<b>Air2 series wireless devices</b>					
MC200 and MC300 magnetic contacts, XIR200W infrared detectors, XDT200W and DT200T dual technology detectors and FD100 smoke detectors <sup>3</sup>	60		120	195	
ARIA/W wireless keypad for each BS200 <sup>1</sup>	4				
Hedera and Smarty/W wireless sounderflashers for each BS200	4				
Remote control keyfobs (KF100, Pebble, Ergo) <sup>2</sup>	150				500
<b>Authentication</b>					
Installer codes	2				
User codes (with associated timers)	50		100	500	
nKey tag or nCard proximity card (with associated timers) <sup>2</sup>	150				500
<b>Telephone communication</b>					
Telephone numbers	15				
Integrated Cloud channel	Yes				
Phone line availability check	Yes				
Automatic voice communicator (SmartLogos30M option, see also voice functions)	Yes				
Integrated automatic digital communicator (ContactID, SIA-IP, pulse)	Yes				

\*\* Total number obtained by adding up the hardwired terminals and the wireless terminals

60S      60L      120L      240L      500L

## Input terminals (zones)

Self-learning of zone balancing •	Yes
Management of two separate zones on each input terminal	Yes
Input terminals on the control panel for shock and roller blind sensors	10
Input terminals on keypad for shock and roller blind sensors	2 for Joy and Aria/HG, 1 for nCode and Concept
Input terminals on expansion board for shock and roller blind sensors (out of 5 available as input/output)	4
Thresholds of programmable input zones	Yes
Calibration of input thresholds •	Yes

• Patent pending

## Additional functions with optional components

Advanced voice functions with SmartLogos30M board	Yes
GSM functions with Nexus, Nexus/G, Nexus/3G and Nexus/4G modules	Yes
GPRS functions and SIA-IP connectivity with Nexus/G, Nexus/3G and Nexus/4G modules	Yes
Web-server, e-mail, ONVIF cameras, KNX IP standard with PrimeLAN board	Yes

## Other features

Weekly timer with two time slots per day (each with 15 exception periods)	20	40	
Manual, daily and weekly programmable thermostats with antifreeze feature (Joy/MAX, Alien/S, Alien/G, Air/HG)	10	15	30
Programmable events with timer and counter management	30	50	60
Management of summer/winter time	Yes		
Automatic date/time update with NTP	Yes		
Programmable arming scenarios (settings for partition status and output status)	30	50	
Output scenarios	50		
Types of shortcuts for immediate actions	38		
Programmable icons	80		
Number of events that can generate actions	2830		
Events that can be stored in the register	4000		
Choice of events to memorize	Yes		
Management of shortcuts via function keys (12) and number keys (10) on keypads	Yes		
Management of shortcuts via LEDs (4) on nBy readers	Yes		
Event-based action generation matrix	Yes		
Generation of action when the event occurs	Yes		
Generation of action when the event restores	Yes		
Zone test from keypad	Yes		
User-friendly programming software (runs under Windows)	Yes		

## Compliance

EN50131-3	Grade 3
EN50131-6	Grade 3 - AT56

<sup>1</sup> The sum of the keypads on the I-BUS and wireless keypads must be  $\leq 10, 15, 15, 30$ .

<sup>2</sup> The sum of the remote-control keyfobs and tags must be  $\leq 100, 150, 150, 500$ .

<sup>3</sup> The sum of the hardwired and wireless terminals must be  $\leq 60, 120, 240, 500$ .

## ORDER CODES

**PRIME060S:** anti-intrusion control panel from 10 to 60 terminals, 10 partitions, 3.7A power supply, compliant with EN50131-6 and EN50131-3 Grade 3.

**PRIME060L:** anti-intrusion control panel from 10 to 60 terminals, 10 partitions, 6.2A power supply, compliant with EN50131-6 and EN50131-3 Grade 3.

**PRIME120L:** anti-intrusion control panel from 10 to 120 terminals, 20 partitions, 6.2A power supply, compliant with EN50131-6 and EN50131-3 Grade 3.

**PRIME240L:** anti-intrusion control panel from 10 to 240 terminals, 30 partitions, 6.2A power supply, compliant with EN50131-6 and EN50131-3 Grade 3.

**PRIME500L:** anti-intrusion control panel from 10 to 500 terminals, 30 partitions, 6.2A power supply, compliant with EN50131-6 and EN50131-3 Grade 3.