

INDOOR DETECTION

Indoor IR & Dual-tech detectors

Pet immune

Grade 3 with antimasking





	Detection range	Opening	TECHNOLOGY		
			Pet immunity	EN50131	Antimasking
JET PA	passive	15 meters - 90°	Yes 0/12/24 kg	Grade 2	-
JET DT	passive + microwave	15 meters - 90°	Yes 0/12/24 kg	Grade 2	-
JET DTM	passive + microwave	15 meters - 90°	Yes 0/12/24 kg	Grade 3	Yes

Range

AVS ELECTRONICS - Italian designer and electronic alarm producer since 1974 - presents JET, its new range of 3 passive infrared detectors with Fresnel lens: JET PA (passive version) JET DT (dualtech version with passive IR and planar microwave), JET DTM (dualtech version with passive IR, planar microwave and anti-masking).

DESIGN, SAFETY AND TECHNOLOGY All JET are digital sensors with **temperature compensation**, placed in a flat housing with modern design and a **spherical Fresnel lens**, that presents a higher quality of detection and a better **immunity to animals**. A «look down» zone eliminates the blind spot below the detector for a total protection of the environment. **Three LED lights** (blue, yellow and green) indicate the state of the detector.

The ***Quad* type build-in electric infrared sensor** divides the functional area in 4 sectors - ie **2 times more** than a conventional detector - to better distinguish environmental changes and provide a greater immunity to animals.

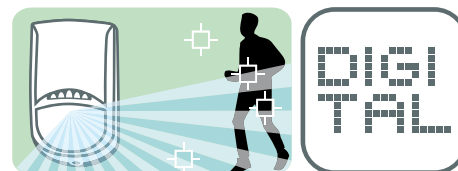
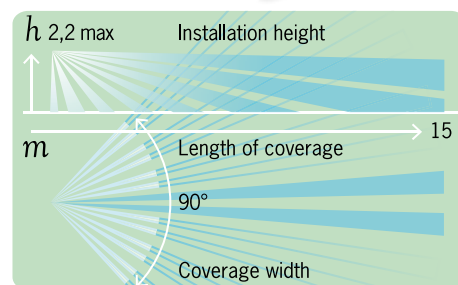
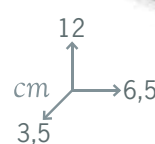
PET IMMUNE AND VERSATILITY Immunity to animals is an option it is possible to exclude or to select for **12 or 24 kg**. To install them quickly and safely, normally closed information outputs can change their **resistance values** by dip-switch according to the needs of the control panel.

Two optional wall and ceiling brackets allow to install JET in the most complex positions.

EN50131 GRADE 3 AND SECURITY All JET are EN 50131 Grade 2, except **JET DTM which is GRADE 3** thanks to its **anti-masking solution** with optical prism.

JET DT and JET DTM can be programmed in «AND» mode (infrared + microwave detection) or «AND» + «OR + « (advanced infrared or microwave detection). According to the settings and in case of failure of the «AND» mode, JET DTM can be forced in «OR +» mode for an even greater security.

MARKETS All indoor environments, **with or without animals**, from any regular domestic or commercial protection up to the highest **banking security**.



PET WEIGHT
0/12/24 KG



AVS ELECTRONICS S.p.A.

Via Valsugana, 63, 35010, Curtarolo, (Padova), Italy
Tel. +39 049 9698 411 - Fax +39 049 9698 407

avs@avselectronics.it - www.avselectronics.com